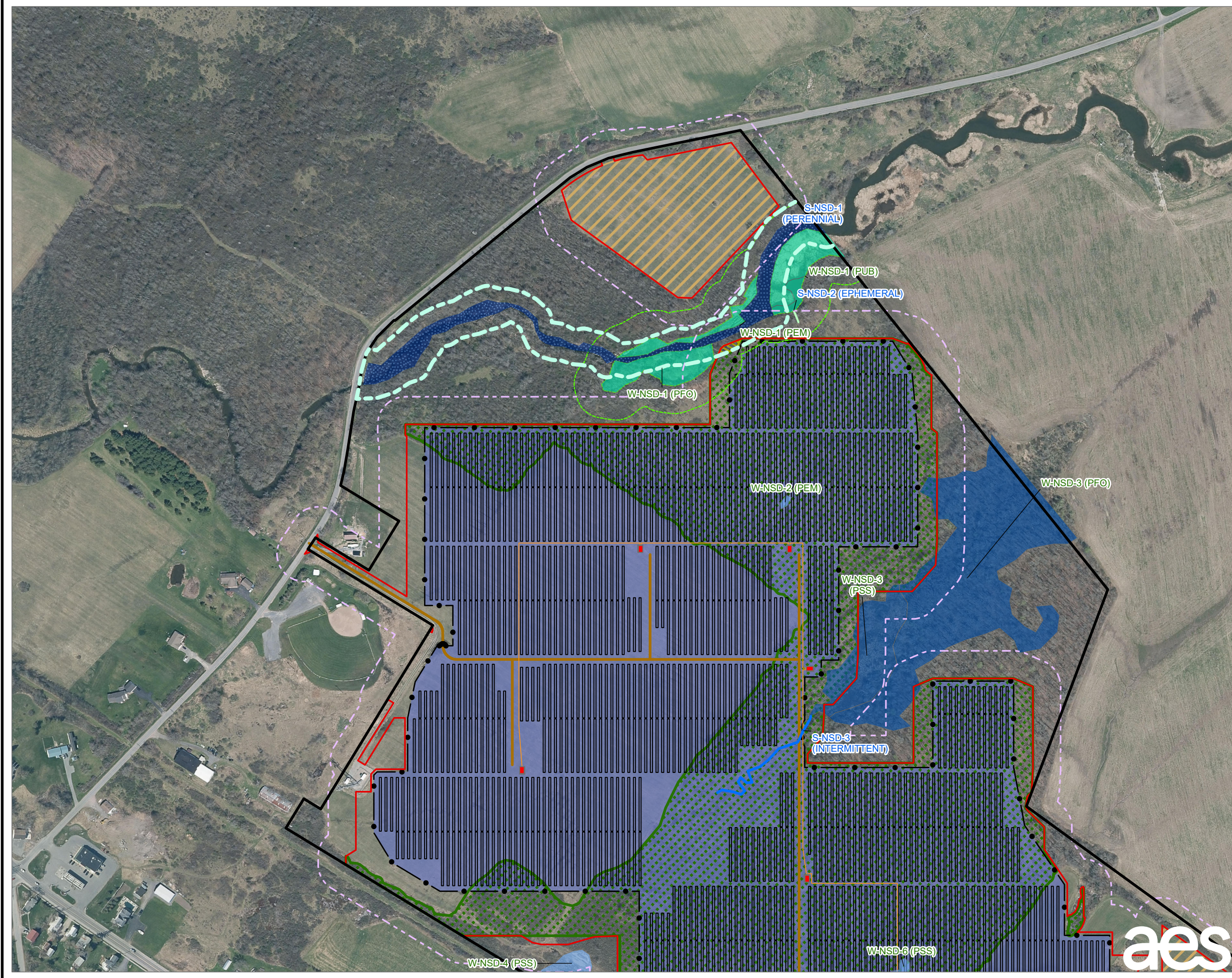


Attachment C

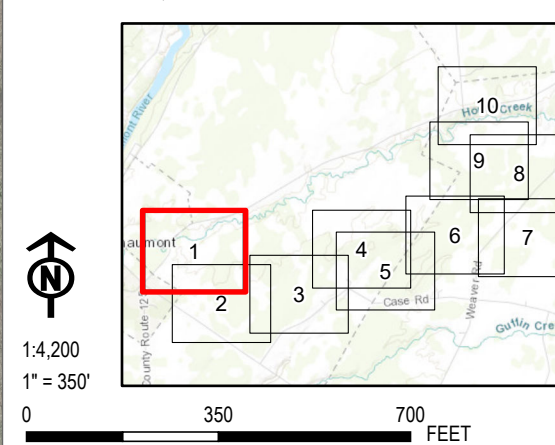
New Figure 15-4



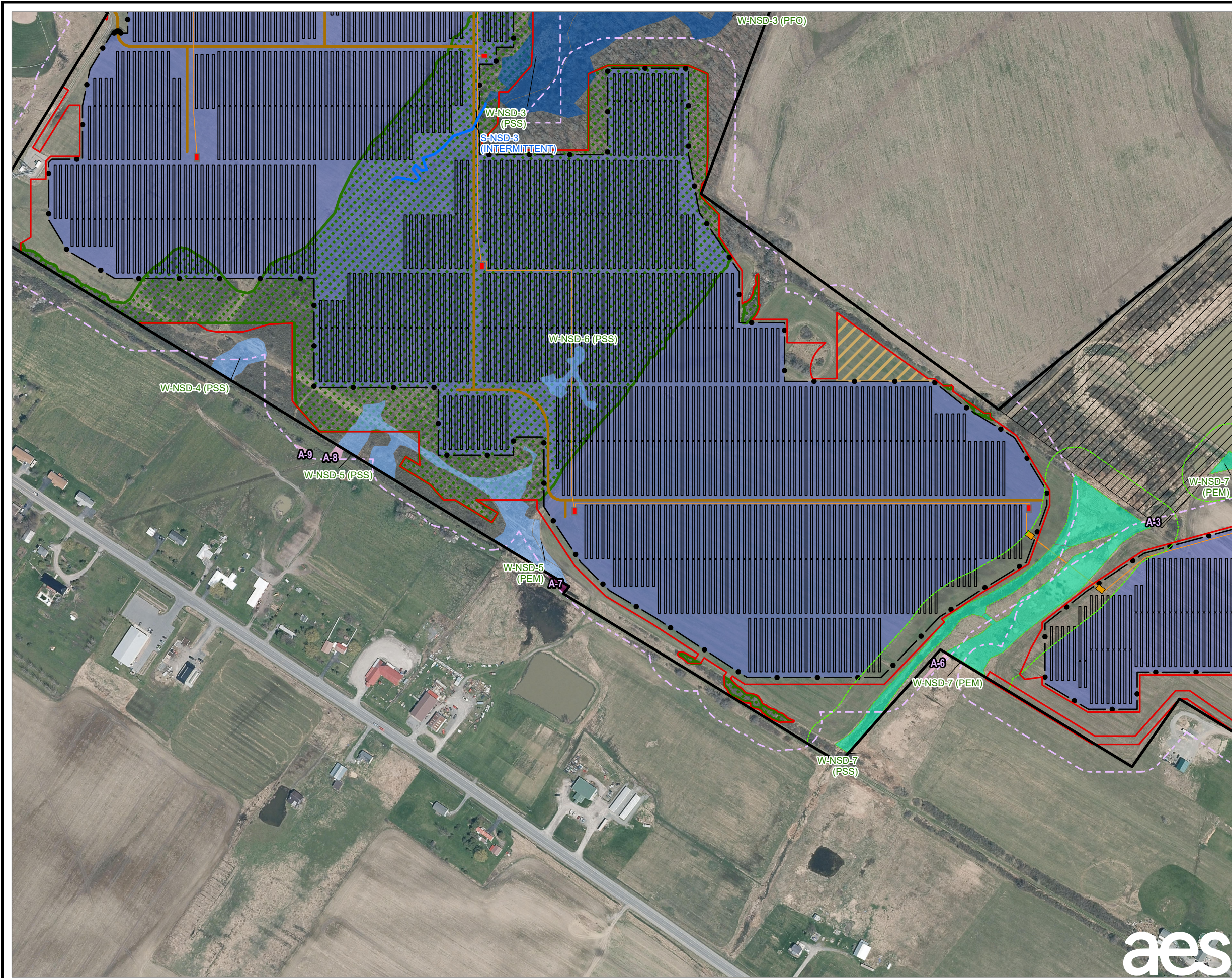
- LEGEND**
- STATE-PROTECTED STREAM 50FT BUFFER
 - FACILITY SITE
 - 100-FOOT BUFFER OF LIMIT OF DISTURBANCE
 - LIMIT OF DISTURBANCE
 - EXISTING CULVERT
 - DELINEATED STREAM LINE
 - DELINEATED STREAM - NON-JURISDICTIONAL
 - DELINEATED STREAM - USACE JURISDICTIONAL
 - DELINEATED STREAM SURFACE WATER - USACE JURISDICTIONAL
 - DELINEATED WETLAND
 - DELINEATED WETLAND - NON-JURISDICTIONAL
 - DELINEATED WETLAND - USACE JURISDICTIONAL
 - DELINEATED WETLAND - STATE JURISDICTIONAL
 - STATE-REGULATED WETLAND ADJACENT AREA
 - JURISDICTION
 - DELINEATED WETLAND - NON-JURISDICTIONAL
 - DELINEATED WETLAND - USACE JURISDICTIONAL
 - DELINEATED WETLAND - STATE JURISDICTIONAL
 - STATE-REGULATED WETLAND ADJACENT AREA
 - APPROXIMATED STREAMS
 - APPROXIMATED FEATURES WITHIN 100 FEET OF LIMIT OF DISTURBANCE
 - APPROXIMATED PEM WETLAND
 - APPROXIMATED PFO WETLAND
 - APPROXIMATED PSS WETLAND
 - LANDOWNER-IMPOSED DEVELOPMENT RESTRICTED AREA
 - PROPOSED INVERTER EQUIPMENT PAD
 - PROPOSED HDD PIT
 - PROPOSED UNDERGROUND COLLECTION LINE
 - PROPOSED OVERHEAD INTERCONNECT LINE
 - PROPOSED FENCE
 - PROPOSED COLLECTION SUBSTATION
 - PROPOSED ACCESS ROAD
 - PROPOSED LAYDOWN YARD
 - PROPOSED OPERATIONS AND MAINTENANCE YARD
 - PROPOSED SOLAR PANEL ARRAY
 - SELECTIVE VEGETATIVE CLEARING
 - VEGETATIVE CLEARING
 - POTENTIAL AVAILABLE AREAS FOR CO-UTILIZATION

NOTES:
1. THIS FIGURE IS DESIGNED TO BE VIEWED OR PRINTED IN COLOR AT 11X17.
2. NON-CONTIGUOUS PORTIONS OF FACILITY PARCELS WHICH ARE NOT CONTROLLED FOR USE AS PART OF THE FACILITY ARE NOT SHOWN ON THIS MAP.

BASE MAP: NYSGIS "LATEST ORTHOIMAGERY" ONLINE SERVICE LAYER.
DATA SOURCES: TRC, NYSGIS.



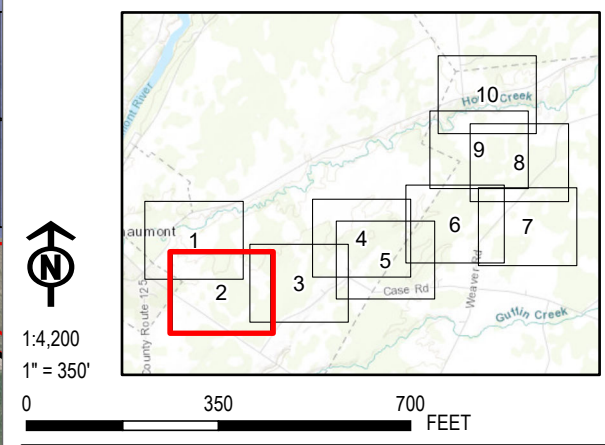
PROJECT: RIVERSIDE SOLAR LLC TOWNS OF LYME & BROWNVILLE JEFFERSON COUNTY, NY	
TITLE: POTENTIAL AGRICULTURAL CO-UTILIZATION AREAS	
DRAWN BY: A. KAILAS	PROJ. NO.: 373222
CHECKED BY: S. PARKER	FIGURE 15-4 Sheet 1 of 10
APPROVED BY: S. KRANES	
DATE: MAY 2022	
aes	
TRC 215 GREENFIELD PKWY, STE 102 LIVERPOOL, NY 13088	



- LEGEND**
- STATE-PROTECTED STREAM 50FT BUFFER
 - FACILITY SITE
 - 100-FOOT BUFFER OF LIMIT OF DISTURBANCE
 - LIMIT OF DISTURBANCE
 - EXISTING CULVERT
 - DELINEATED STREAM LINE
 - DELINEATED STREAM - NON-JURISDICTIONAL
 - DELINEATED STREAM - USACE JURISDICTIONAL
 - DELINEATED STREAM SURFACE WATER - USACE JURISDICTIONAL
 - DELINEATED WETLAND
 - DELINEATED WETLAND - NON-JURISDICTIONAL
 - DELINEATED WETLAND - USACE JURISDICTIONAL
 - DELINEATED WETLAND - STATE JURISDICTIONAL
 - STATE-REGULATED WETLAND ADJACENT AREA
 - JURISDICTION
 - DELINEATED WETLAND - NON-JURISDICTIONAL
 - DELINEATED WETLAND - USACE JURISDICTIONAL
 - DELINEATED WETLAND - STATE JURISDICTIONAL
 - STATE-REGULATED WETLAND ADJACENT AREA
 - APPROXIMATED STREAMS
 - APPROXIMATED FEATURES WITHIN 100 FEET OF LIMIT OF DISTURBANCE
 - APPROXIMATED PEM WETLAND
 - APPROXIMATED PFO WETLAND
 - APPROXIMATED PSS WETLAND
 - LANDOWNER-IMPOSED DEVELOPMENT RESTRICTED AREA
 - PROPOSED INVERTER EQUIPMENT PAD
 - PROPOSED HDD PIT
 - PROPOSED UNDERGROUND COLLECTION LINE
 - PROPOSED OVERHEAD INTERCONNECT LINE
 - PROPOSED FENCE
 - PROPOSED COLLECTION SUBSTATION
 - PROPOSED ACCESS ROAD
 - PROPOSED LAYDOWN YARD
 - PROPOSED OPERATIONS AND MAINTENANCE YARD
 - PROPOSED SOLAR PANEL ARRAY
 - SELECTIVE VEGETATIVE CLEARING
 - VEGETATIVE CLEARING
 - POTENTIAL AVAILABLE AREAS FOR CO-UTILIZATION

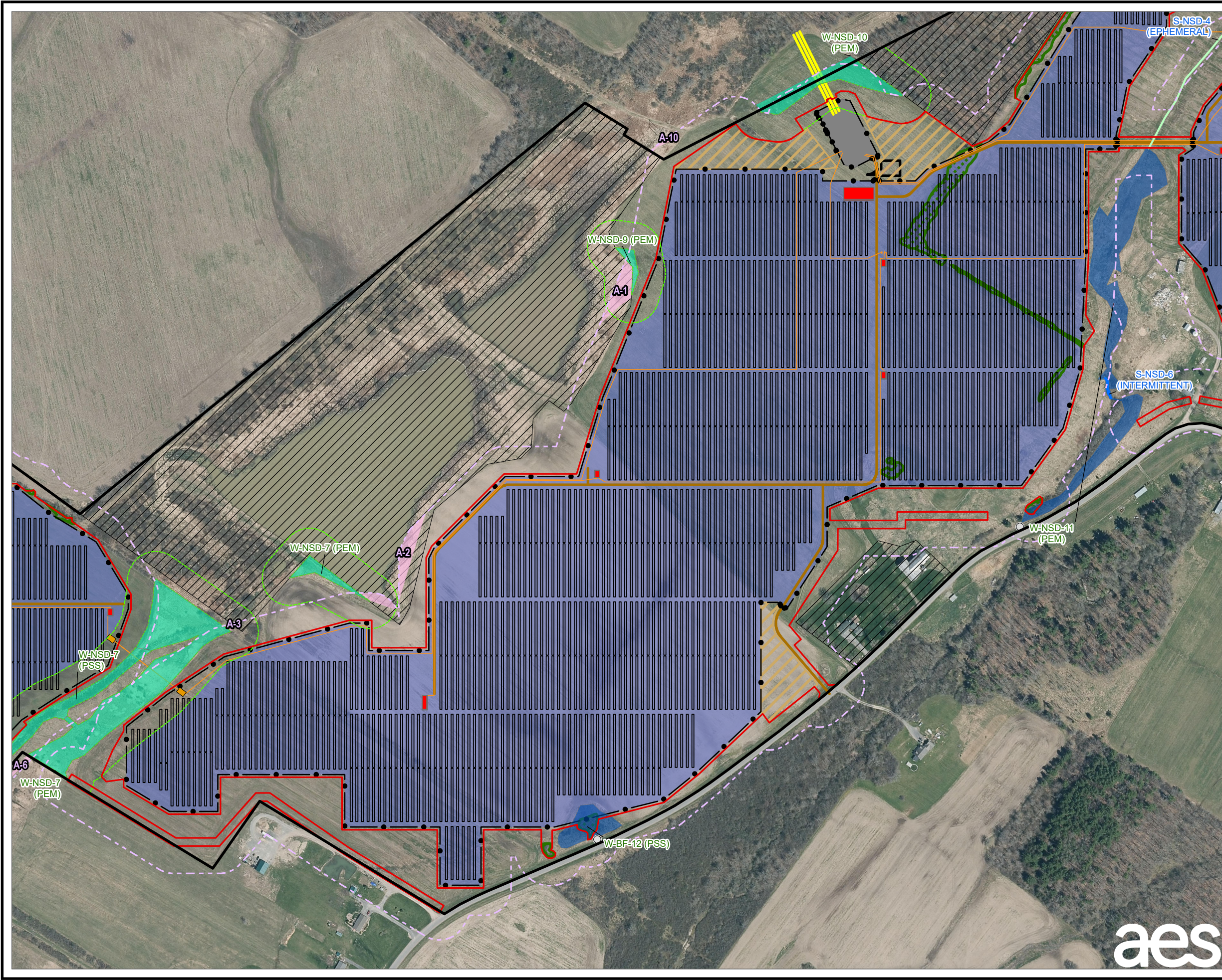
NOTES:
1. THIS FIGURE IS DESIGNED TO BE VIEWED OR PRINTED IN COLOR AT 11X17.
2. NON-CONTIGUOUS PORTIONS OF FACILITY PARCELS WHICH ARE NOT CONTROLLED FOR USE AS PART OF THE FACILITY ARE NOT SHOWN ON THIS MAP.

BASE MAP: NYSGIS "LATEST ORTHOIMAGERY" ONLINE SERVICE LAYER.
DATA SOURCES: TRC, NYSGIS.



PROJECT:		RIVERSIDE SOLAR LLC TOWNS OF LYME & BROWNVILLE JEFFERSON COUNTY, NY	
TITLE:		POTENTIAL AGRICULTURAL CO-UTILIZATION AREAS	
DRAWN BY:	A. KAILAS	PROJ. NO.:	373222
CHECKED BY:	S. PARKER	FIGURE 15-4 Sheet 2 of 10	
APPROVED BY:	S. KRANES		
DATE:	MAY 2022		
		215 GREENFIELD PKWY, STE 102 LIVERPOOL, NY 13088	

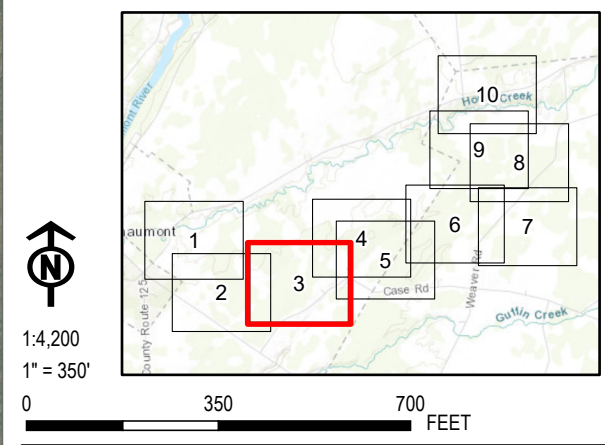




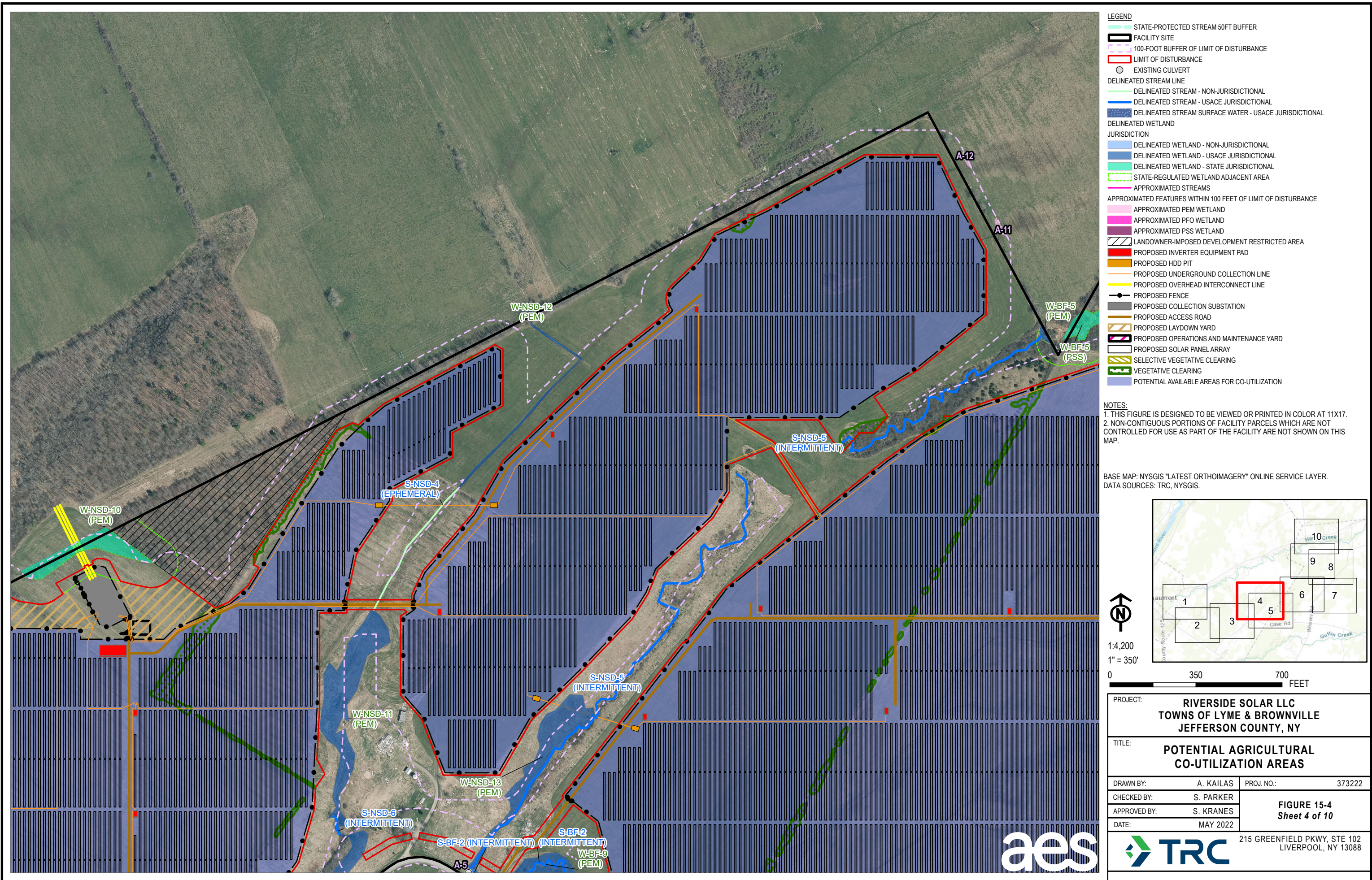
- LEGEND**
- STATE-PROTECTED STREAM 50FT BUFFER
 - FACILITY SITE
 - 100-FOOT BUFFER OF LIMIT OF DISTURBANCE
 - LIMIT OF DISTURBANCE
 - EXISTING CULVERT
 - DELINEATED STREAM LINE
 - DELINEATED STREAM - NON-JURISDICTIONAL
 - DELINEATED STREAM - USACE JURISDICTIONAL
 - DELINEATED STREAM SURFACE WATER - USACE JURISDICTIONAL
 - DELINEATED WETLAND
 - JURISDICTION
 - DELINEATED WETLAND - NON-JURISDICTIONAL
 - DELINEATED WETLAND - USACE JURISDICTIONAL
 - DELINEATED WETLAND - STATE JURISDICTIONAL
 - STATE-REGULATED WETLAND ADJACENT AREA
 - APPROXIMATED STREAMS
 - APPROXIMATED FEATURES WITHIN 100 FEET OF LIMIT OF DISTURBANCE
 - APPROXIMATED PEM WETLAND
 - APPROXIMATED PFO WETLAND
 - APPROXIMATED PSS WETLAND
 - LANDOWNER-IMPOSED DEVELOPMENT RESTRICTED AREA
 - PROPOSED INVERTER EQUIPMENT PAD
 - PROPOSED HDD PIT
 - PROPOSED UNDERGROUND COLLECTION LINE
 - PROPOSED OVERHEAD INTERCONNECT LINE
 - PROPOSED FENCE
 - PROPOSED COLLECTION SUBSTATION
 - PROPOSED ACCESS ROAD
 - PROPOSED LAYDOWN YARD
 - PROPOSED OPERATIONS AND MAINTENANCE YARD
 - PROPOSED SOLAR PANEL ARRAY
 - SELECTIVE VEGETATIVE CLEARING
 - VEGETATIVE CLEARING
 - POTENTIAL AVAILABLE AREAS FOR CO-UTILIZATION

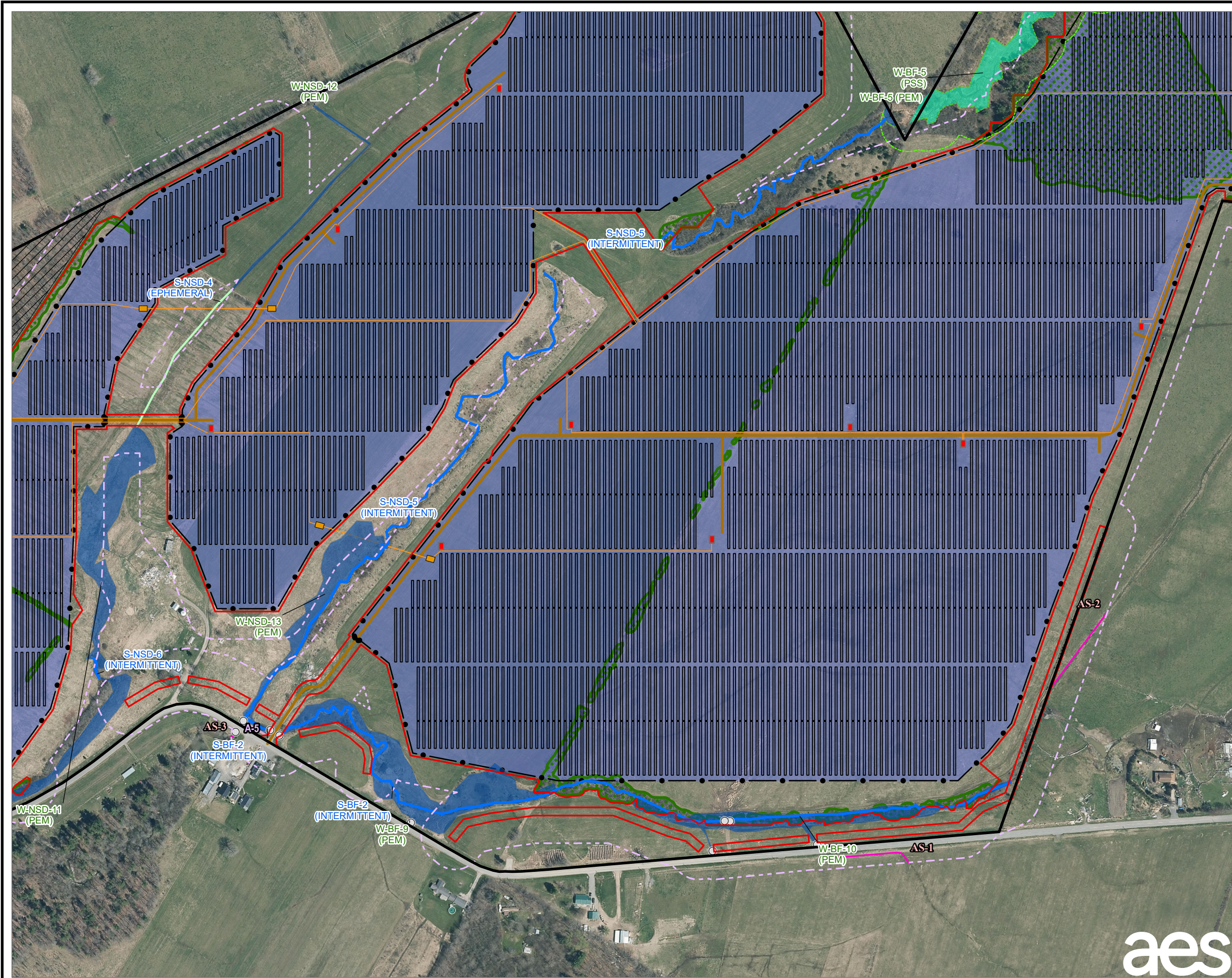
NOTES:
1. THIS FIGURE IS DESIGNED TO BE VIEWED OR PRINTED IN COLOR AT 11X17.
2. NON-CONTIGUOUS PORTIONS OF FACILITY PARCELS WHICH ARE NOT CONTROLLED FOR USE AS PART OF THE FACILITY ARE NOT SHOWN ON THIS MAP.

BASE MAP: NYSGIS "LATEST ORTHOIMAGERY" ONLINE SERVICE LAYER.
DATA SOURCES: TRC, NYSGIS.



PROJECT:		RIVERSIDE SOLAR LLC TOWNS OF LYME & BROWNVILLE JEFFERSON COUNTY, NY	
TITLE:		POTENTIAL AGRICULTURAL CO-UTILIZATION AREAS	
DRAWN BY:	A. KAILAS	PROJ. NO.:	373222
CHECKED BY:	S. PARKER	FIGURE 15-4 Sheet 3 of 10	
APPROVED BY:	S. KRANES		
DATE:	MAY 2022		
aes		TRC	
		215 GREENFIELD PKWY, STE 102 LIVERPOOL, NY 13088	

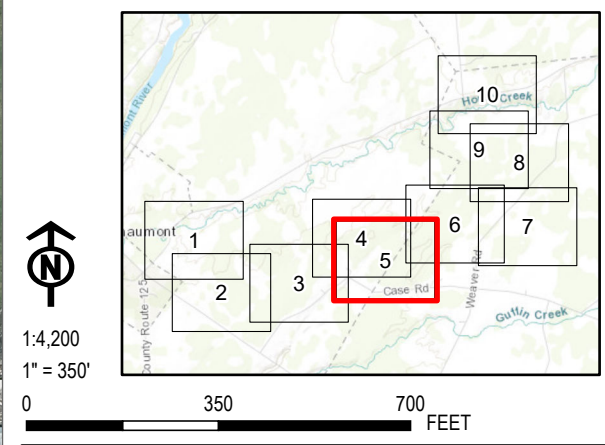




- LEGEND**
- STATE-PROTECTED STREAM 50FT BUFFER
 - FACILITY SITE
 - 100-FOOT BUFFER OF LIMIT OF DISTURBANCE
 - LIMIT OF DISTURBANCE
 - EXISTING CULVERT
 - DELINEATED STREAM LINE
 - DELINEATED STREAM - NON-JURISDICTIONAL
 - DELINEATED STREAM - USACE JURISDICTIONAL
 - DELINEATED STREAM SURFACE WATER - USACE JURISDICTIONAL
 - DELINEATED WETLAND
 - DELINEATED WETLAND - NON-JURISDICTIONAL
 - DELINEATED WETLAND - USACE JURISDICTIONAL
 - DELINEATED WETLAND - STATE JURISDICTIONAL
 - STATE-REGULATED WETLAND ADJACENT AREA
 - JURISDICTION
 - DELINEATED WETLAND - NON-JURISDICTIONAL
 - DELINEATED WETLAND - USACE JURISDICTIONAL
 - DELINEATED WETLAND - STATE JURISDICTIONAL
 - STATE-REGULATED WETLAND ADJACENT AREA
 - APPROXIMATED STREAMS
 - APPROXIMATED FEATURES WITHIN 100 FEET OF LIMIT OF DISTURBANCE
 - APPROXIMATED PEM WETLAND
 - APPROXIMATED PFO WETLAND
 - APPROXIMATED PSS WETLAND
 - LANDOWNER-IMPOSED DEVELOPMENT RESTRICTED AREA
 - PROPOSED INVERTER EQUIPMENT PAD
 - PROPOSED HDD PIT
 - PROPOSED UNDERGROUND COLLECTION LINE
 - PROPOSED OVERHEAD INTERCONNECT LINE
 - PROPOSED FENCE
 - PROPOSED COLLECTION SUBSTATION
 - PROPOSED ACCESS ROAD
 - PROPOSED LAYDOWN YARD
 - PROPOSED OPERATIONS AND MAINTENANCE YARD
 - PROPOSED SOLAR PANEL ARRAY
 - SELECTIVE VEGETATIVE CLEARING
 - VEGETATIVE CLEARING
 - POTENTIAL AVAILABLE AREAS FOR CO-UTILIZATION

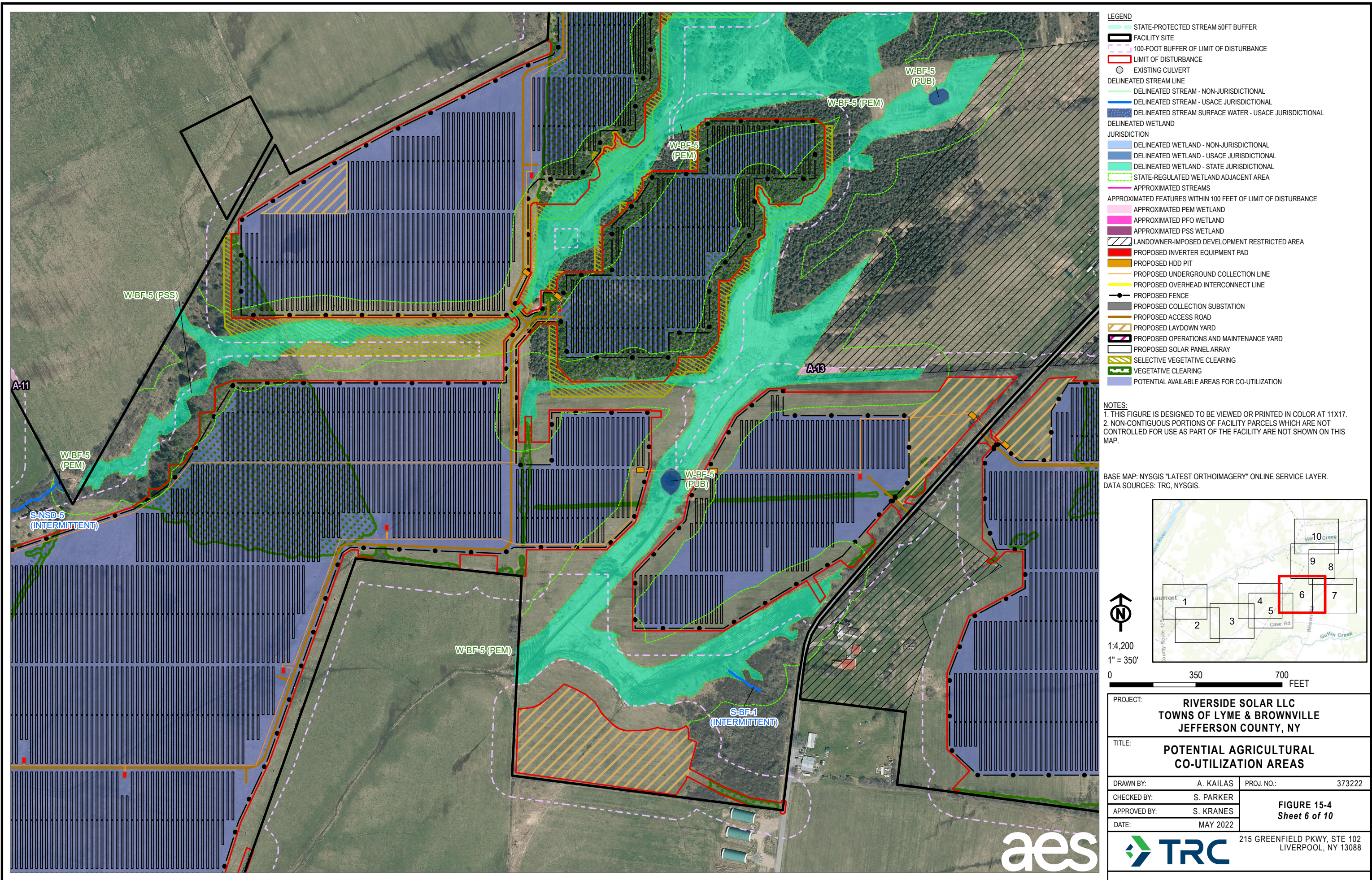
NOTES:
1. THIS FIGURE IS DESIGNED TO BE VIEWED OR PRINTED IN COLOR AT 11X17.
2. NON-CONTIGUOUS PORTIONS OF FACILITY PARCELS WHICH ARE NOT CONTROLLED FOR USE AS PART OF THE FACILITY ARE NOT SHOWN ON THIS MAP.

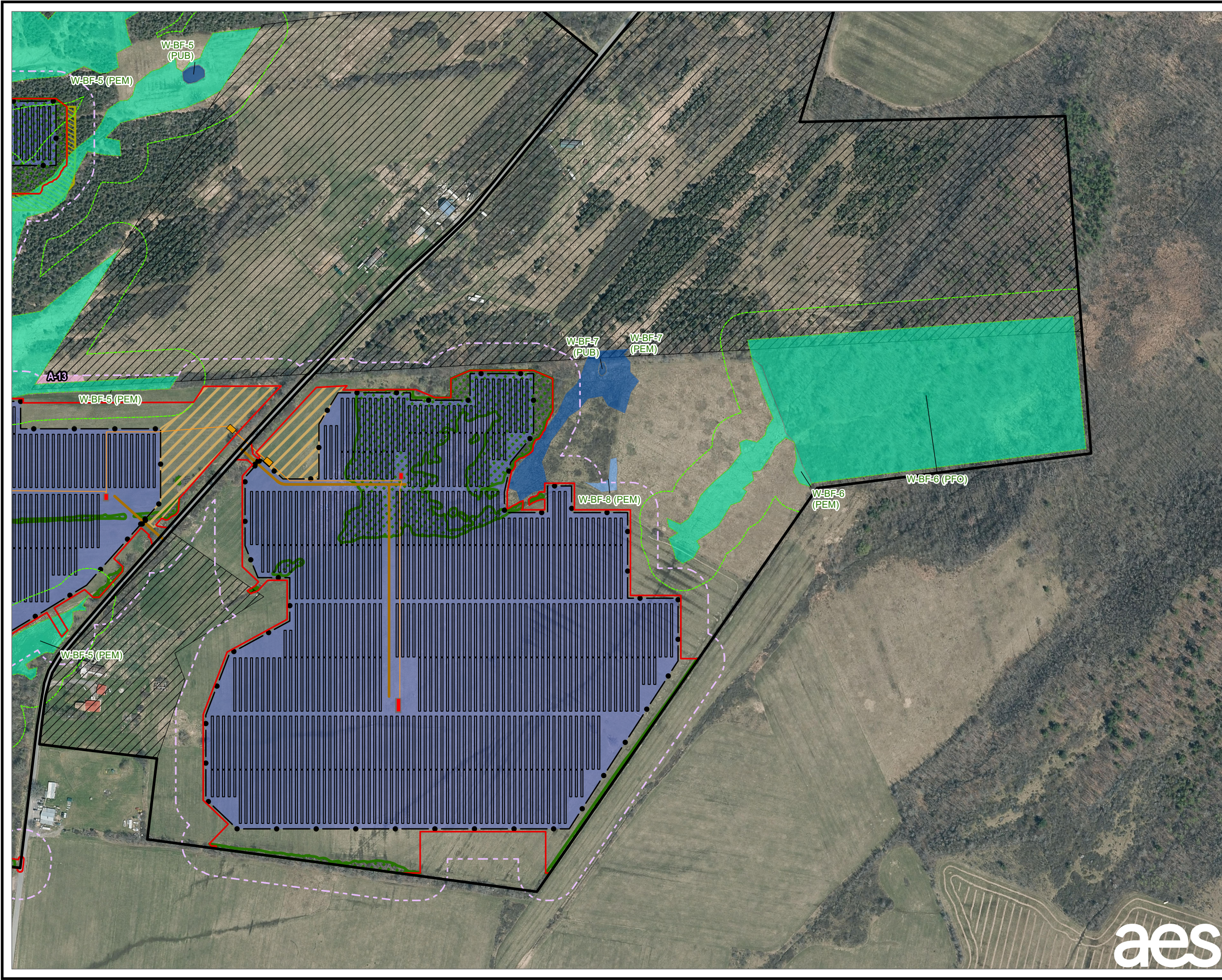
BASE MAP: NYSGIS "LATEST ORTHOIMAGERY" ONLINE SERVICE LAYER.
DATA SOURCES: TRC, NYSGIS.



PROJECT:		RIVERSIDE SOLAR LLC TOWNS OF LYME & BROWNVILLE JEFFERSON COUNTY, NY	
TITLE:		POTENTIAL AGRICULTURAL CO-UTILIZATION AREAS	
DRAWN BY:	A. KAILAS	PROJ. NO.:	373222
CHECKED BY:	S. PARKER	FIGURE 15-4 Sheet 5 of 10	
APPROVED BY:	S. KRANES		
DATE:	MAY 2022		
		215 GREENFIELD PKWY, STE 102 LIVERPOOL, NY 13088	





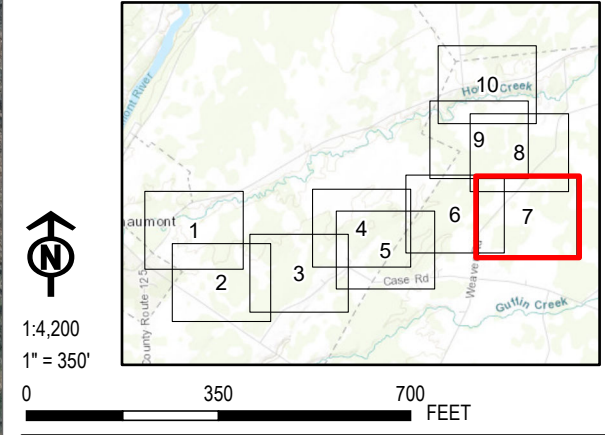


- LEGEND**
- STATE-PROTECTED STREAM 50FT BUFFER
 - FACILITY SITE
 - 100-FOOT BUFFER OF LIMIT OF DISTURBANCE
 - LIMIT OF DISTURBANCE
 - EXISTING CULVERT
 - DELINEATED STREAM LINE
 - DELINEATED STREAM - NON-JURISDICTIONAL
 - DELINEATED STREAM - USACE JURISDICTIONAL
 - DELINEATED STREAM SURFACE WATER - USACE JURISDICTIONAL
 - DELINEATED WETLAND
 - DELINEATED WETLAND - NON-JURISDICTIONAL
 - DELINEATED WETLAND - USACE JURISDICTIONAL
 - DELINEATED WETLAND - STATE JURISDICTIONAL
 - STATE-REGULATED WETLAND ADJACENT AREA
 - JURISDICTION
 - APPROXIMATED STREAMS
 - APPROXIMATED FEATURES WITHIN 100 FEET OF LIMIT OF DISTURBANCE
 - APPROXIMATED PEM WETLAND
 - APPROXIMATED PFO WETLAND
 - APPROXIMATED PSS WETLAND
 - LANDOWNER-IMPOSED DEVELOPMENT RESTRICTED AREA
 - PROPOSED INVERTER EQUIPMENT PAD
 - PROPOSED HDD PIT
 - PROPOSED UNDERGROUND COLLECTION LINE
 - PROPOSED OVERHEAD INTERCONNECT LINE
 - PROPOSED FENCE
 - PROPOSED COLLECTION SUBSTATION
 - PROPOSED ACCESS ROAD
 - PROPOSED LAYDOWN YARD
 - PROPOSED OPERATIONS AND MAINTENANCE YARD
 - PROPOSED SOLAR PANEL ARRAY
 - SELECTIVE TREE CLEARING
 - TREE CLEARING
 - ANTICIPATED LEASE/PURCHASE AREAS

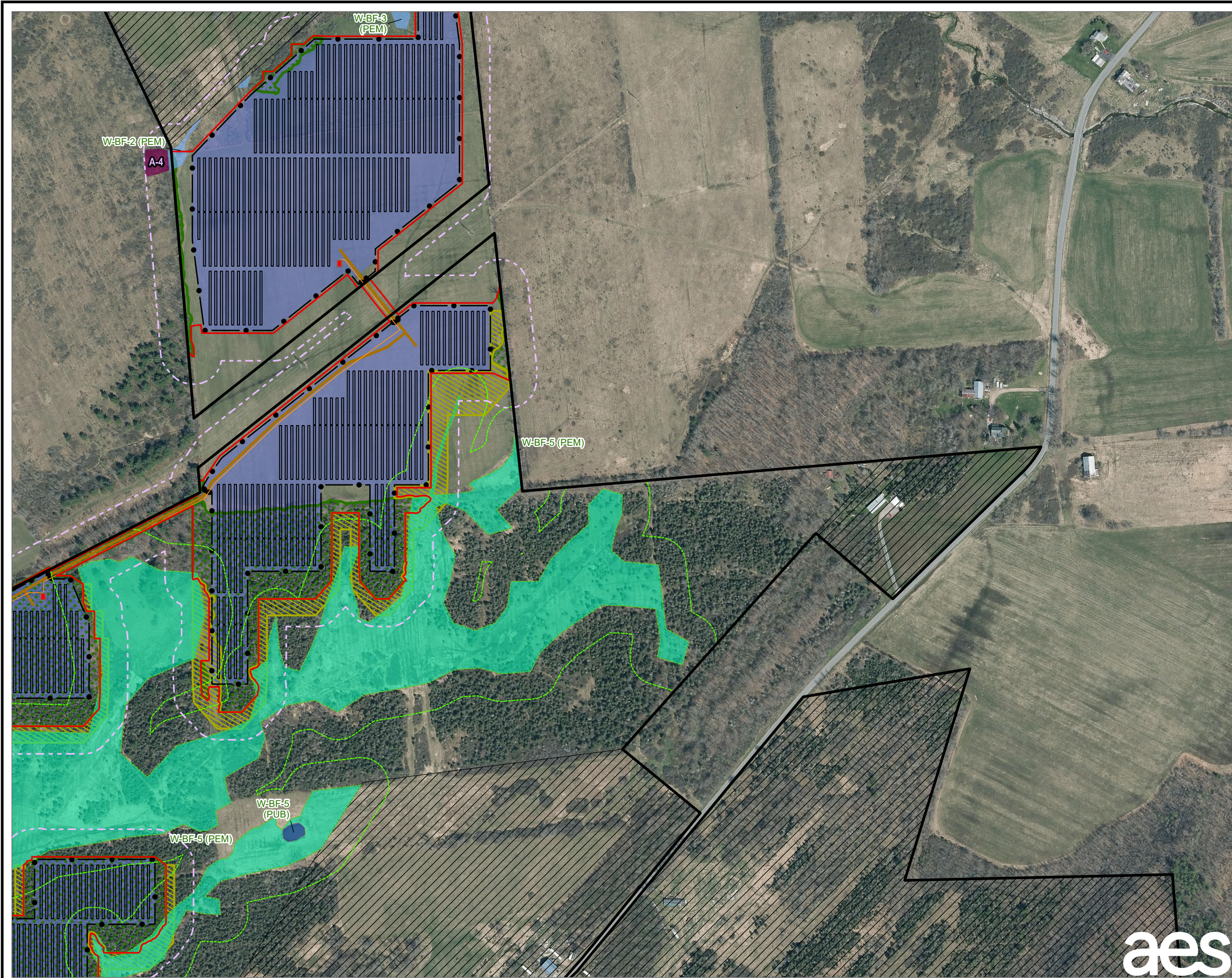
NOTES:

1. THIS FIGURE IS DESIGNED TO BE VIEWED OR PRINTED IN COLOR AT 11X17.
2. NON-CONTIGUOUS PORTIONS OF FACILITY PARCELS WHICH ARE NOT CONTROLLED FOR USE AS PART OF THE FACILITY ARE NOT SHOWN ON THIS MAP.
3. THE WETLAND STUDY AREA CONSISTS OF THE FACILITY SITE EXCEPT AREAS OF LANDOWNER-IMPOSED DEVELOPMENT RESTRICTION.

BASE MAP: NYSGIS "LATEST ORTHOIMAGERY" ONLINE SERVICE LAYER.
DATA SOURCES: TRC, NYSGIS.



PROJECT:		RIVERSIDE SOLAR LLC TOWNS OF LYME & BROWNVILLE JEFFERSON COUNTY, NY	
TITLE:		POTENTIAL AGRICULTURAL CO-UTILIZATION AREAS	
DRAWN BY:	A. KAILAS	PROJ. NO.:	373222
CHECKED BY:	S. PARKER	REVISED FIGURE 15-4 Sheet 7 of 10	
APPROVED BY:	S. KRANES		
DATE:	MAY 2022		
aes		TRC	
		215 GREENFIELD PKWY, STE 102 LIVERPOOL, NY 13088	



LEGEND

- STATE-PROTECTED STREAM 50FT BUFFER
- FACILITY SITE
- 100-FOOT BUFFER OF LIMIT OF DISTURBANCE
- LIMIT OF DISTURBANCE
- EXISTING CULVERT
- DELINEATED STREAM LINE
 - DELINEATED STREAM - NON-JURISDICTIONAL
 - DELINEATED STREAM - USACE JURISDICTIONAL
 - DELINEATED STREAM SURFACE WATER - USACE JURISDICTIONAL
- DELINEATED WETLAND
 - DELINEATED WETLAND - NON-JURISDICTIONAL
 - DELINEATED WETLAND - USACE JURISDICTIONAL
 - DELINEATED WETLAND - STATE JURISDICTIONAL
 - STATE-REGULATED WETLAND ADJACENT AREA
- JURISDICTION
 - DELINEATED WETLAND - NON-JURISDICTIONAL
 - DELINEATED WETLAND - USACE JURISDICTIONAL
 - DELINEATED WETLAND - STATE JURISDICTIONAL
 - STATE-REGULATED WETLAND ADJACENT AREA
- APPROXIMATED STREAMS
- APPROXIMATED FEATURES WITHIN 100 FEET OF LIMIT OF DISTURBANCE
 - APPROXIMATED PEM WETLAND
 - APPROXIMATED PFO WETLAND
 - APPROXIMATED PSS WETLAND
- LANDOWNER-IMPOSED DEVELOPMENT RESTRICTED AREA
- PROPOSED INVERTER EQUIPMENT PAD
- PROPOSED HDD PIT
- PROPOSED UNDERGROUND COLLECTION LINE
- PROPOSED OVERHEAD INTERCONNECT LINE
- PROPOSED FENCE
- PROPOSED COLLECTION SUBSTATION
- PROPOSED ACCESS ROAD
- PROPOSED LAYDOWN YARD
- PROPOSED OPERATIONS AND MAINTENANCE YARD
- PROPOSED SOLAR PANEL ARRAY
- SELECTIVE TREE CLEARING
- TREE CLEARING
- ANTICIPATED LEASE/PURCHASE AREAS

NOTES:

- THIS FIGURE IS DESIGNED TO BE VIEWED OR PRINTED IN COLOR AT 11X17.
- NON-CONTIGUOUS PORTIONS OF FACILITY PARCELS WHICH ARE NOT CONTROLLED FOR USE AS PART OF THE FACILITY ARE NOT SHOWN ON THIS MAP.
- THE WETLAND STUDY AREA CONSISTS OF THE FACILITY SITE EXCEPT AREAS OF LANDOWNER-IMPOSED DEVELOPMENT RESTRICTION.

BASE MAP: NYSGIS "LATEST ORTHOIMAGERY" ONLINE SERVICE LAYER.
DATA SOURCES: TRC, NYSGIS.

10
9
8
7
6
5
4
3
2
1

1:4,200
1" = 350'

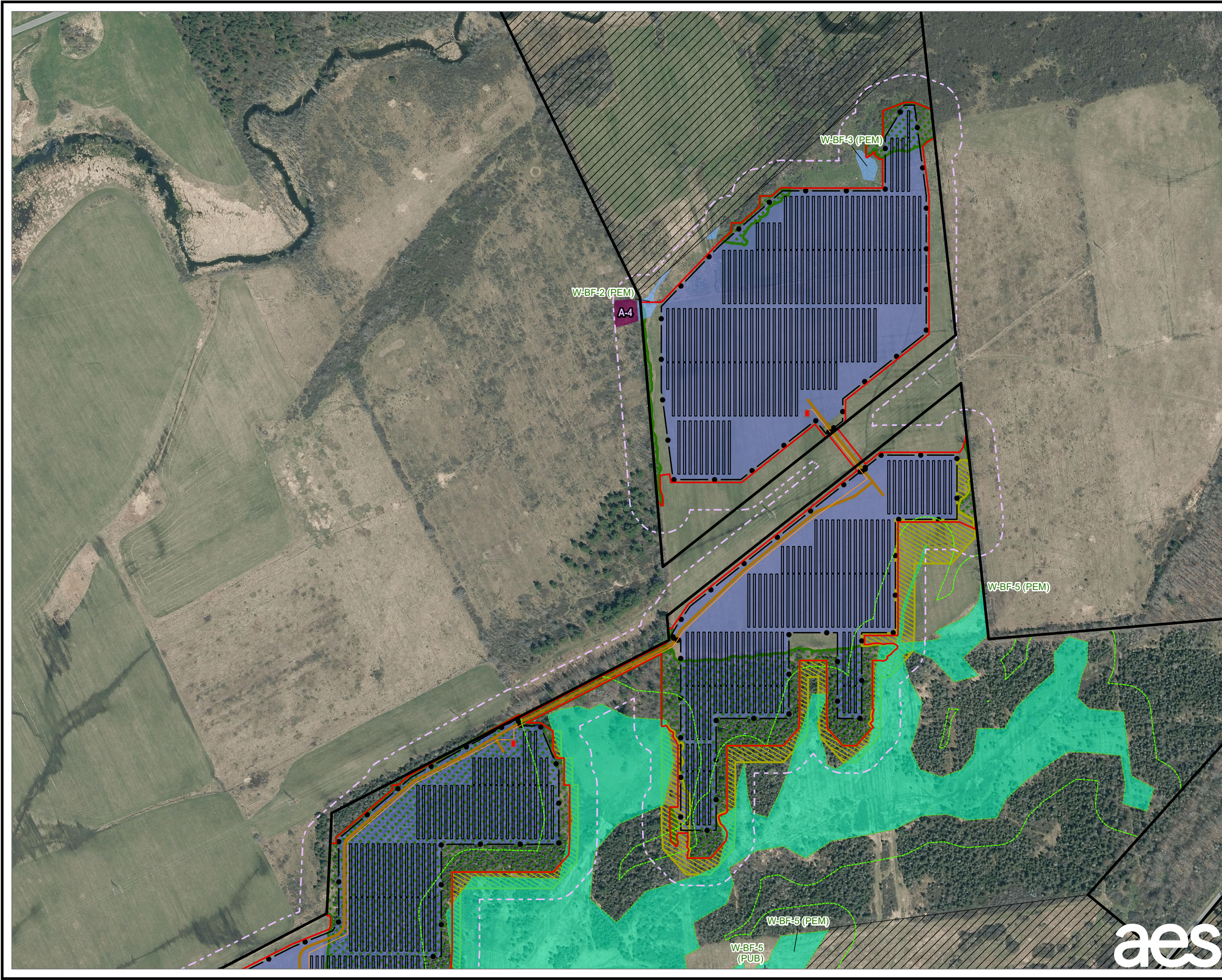
0 350 700 FEET

PROJECT: RIVERSIDE SOLAR LLC
TOWNS OF LYME & BROWNVILLE
JEFFERSON COUNTY, NY

TITLE: POTENTIAL AGRICULTURAL
CO-UTILIZATION AREAS

DRAWN BY:	A. KAILAS	PROJ. NO.:	373222
CHECKED BY:	S. PARKER	REVISED FIGURE 15-4 <i>Sheet 8 of 10</i>	
APPROVED BY:	S. KRANES		
DATE:	MAY 2022		

215 GREENFIELD PKWY, STE 102
LIVERPOOL, NY 13088

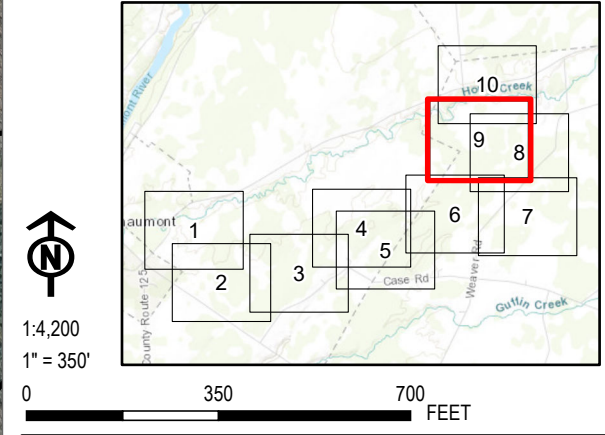


- LEGEND**
- STATE-PROTECTED STREAM 50FT BUFFER
 - FACILITY SITE
 - 100-FOOT BUFFER OF LIMIT OF DISTURBANCE
 - LIMIT OF DISTURBANCE
 - EXISTING CULVERT
 - DELINEATED STREAM LINE
 - DELINEATED STREAM - NON-JURISDICTIONAL
 - DELINEATED STREAM - USACE JURISDICTIONAL
 - DELINEATED STREAM SURFACE WATER - USACE JURISDICTIONAL
 - DELINEATED WETLAND
 - JURISDICTION
 - DELINEATED WETLAND - NON-JURISDICTIONAL
 - DELINEATED WETLAND - USACE JURISDICTIONAL
 - DELINEATED WETLAND - STATE JURISDICTIONAL
 - STATE-REGULATED WETLAND ADJACENT AREA
 - APPROXIMATED STREAMS
 - APPROXIMATED FEATURES WITHIN 100 FEET OF LIMIT OF DISTURBANCE
 - APPROXIMATED PEM WETLAND
 - APPROXIMATED PFO WETLAND
 - APPROXIMATED PSS WETLAND
 - LANDOWNER-IMPOSED DEVELOPMENT RESTRICTED AREA
 - PROPOSED INVERTER EQUIPMENT PAD
 - PROPOSED HDD PIT
 - PROPOSED UNDERGROUND COLLECTION LINE
 - PROPOSED OVERHEAD INTERCONNECT LINE
 - PROPOSED FENCE
 - PROPOSED COLLECTION SUBSTATION
 - PROPOSED ACCESS ROAD
 - PROPOSED LAYDOWN YARD
 - PROPOSED OPERATIONS AND MAINTENANCE YARD
 - PROPOSED SOLAR PANEL ARRAY
 - SELECTIVE TREE CLEARING
 - TREE CLEARING
 - ANTICIPATED LEASE/PURCHASE AREAS

NOTES:

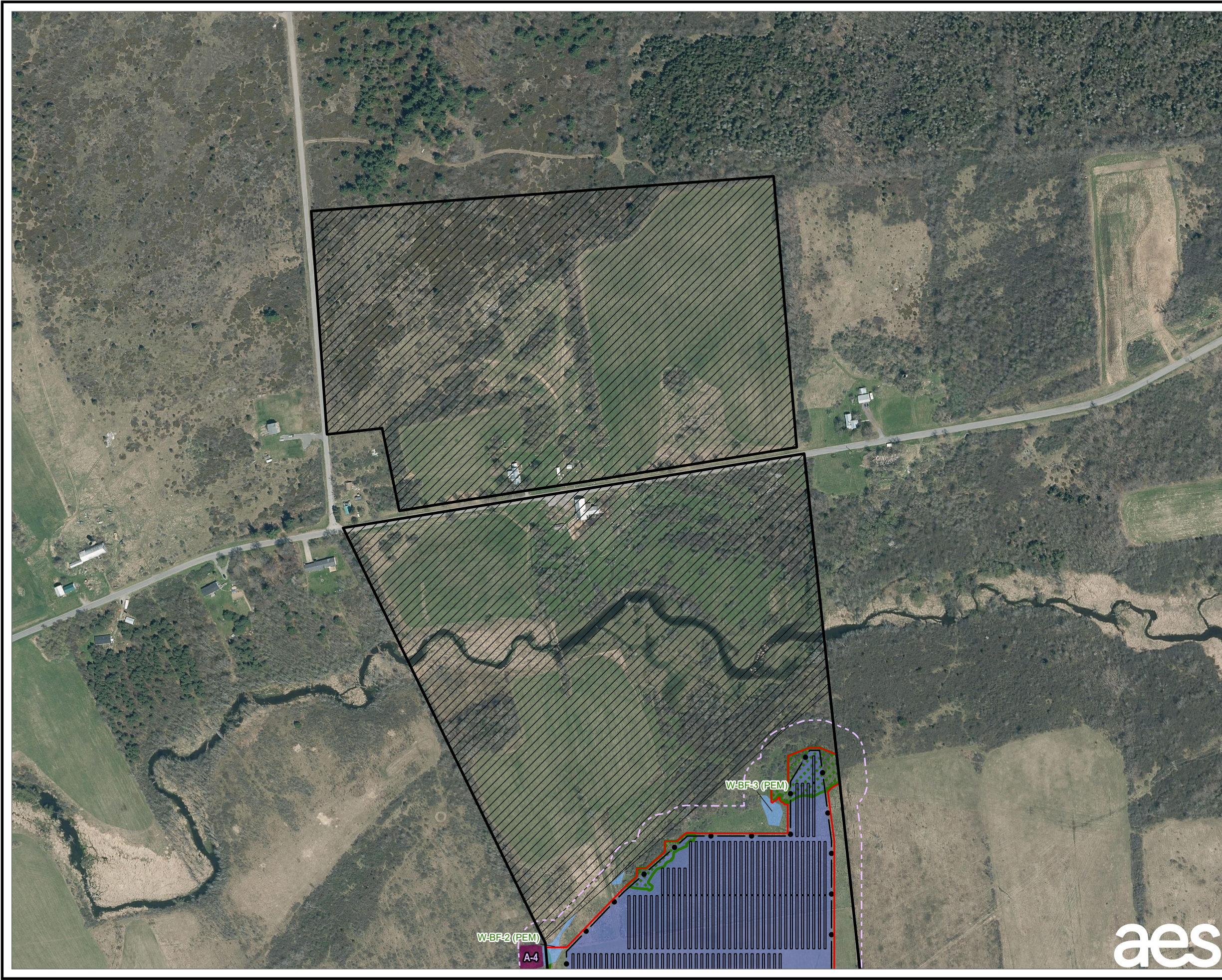
1. THIS FIGURE IS DESIGNED TO BE VIEWED OR PRINTED IN COLOR AT 11X17.
2. NON-CONTIGUOUS PORTIONS OF FACILITY PARCELS WHICH ARE NOT CONTROLLED FOR USE AS PART OF THE FACILITY ARE NOT SHOWN ON THIS MAP.
3. THE WETLAND STUDY AREA CONSISTS OF THE FACILITY SITE EXCEPT AREAS OF LANDOWNER-IMPOSED DEVELOPMENT RESTRICTION.

BASE MAP: NYSGIS "LATEST ORTHOIMAGERY" ONLINE SERVICE LAYER.
DATA SOURCES: TRC, NYSGIS.



PROJECT:		RIVERSIDE SOLAR LLC TOWNS OF LYME & BROWNVILLE JEFFERSON COUNTY, NY	
TITLE:		POTENTIAL AGRICULTURAL CO-UTILIZATION AREAS	
DRAWN BY:	A. KAILAS	PROJ. NO.:	373222
CHECKED BY:	S. PARKER	REVISED FIGURE 15-4 Sheet 9 of 10	
APPROVED BY:	S. KRANES		
DATE:	MAY 2022		
		215 GREENFIELD PKWY, STE 102 LIVERPOOL, NY 13088	



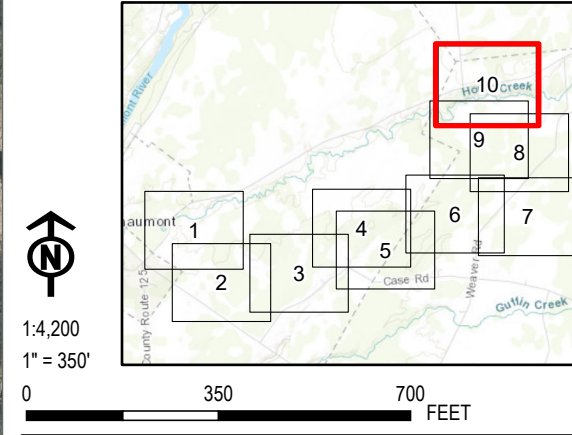


- LEGEND**
- STATE-PROTECTED STREAM 50FT BUFFER
 - FACILITY SITE
 - 100-FOOT BUFFER OF LIMIT OF DISTURBANCE
 - LIMIT OF DISTURBANCE
 - EXISTING CULVERT
 - DELINEATED STREAM LINE
 - DELINEATED STREAM - NON-JURISDICTIONAL
 - DELINEATED STREAM - USACE JURISDICTIONAL
 - DELINEATED STREAM SURFACE WATER - USACE JURISDICTIONAL
 - DELINEATED WETLAND
 - JURISDICTION
 - DELINEATED WETLAND - NON-JURISDICTIONAL
 - DELINEATED WETLAND - USACE JURISDICTIONAL
 - DELINEATED WETLAND - STATE JURISDICTIONAL
 - STATE-REGULATED WETLAND ADJACENT AREA
 - APPROXIMATED STREAMS
 - APPROXIMATED FEATURES WITHIN 100 FEET OF LIMIT OF DISTURBANCE
 - APPROXIMATED PEM WETLAND
 - APPROXIMATED PFO WETLAND
 - APPROXIMATED PSS WETLAND
 - LANDOWNER-IMPOSED DEVELOPMENT RESTRICTED AREA
 - PROPOSED INVERTER EQUIPMENT PAD
 - PROPOSED HDD PIT
 - PROPOSED UNDERGROUND COLLECTION LINE
 - PROPOSED OVERHEAD INTERCONNECT LINE
 - PROPOSED FENCE
 - PROPOSED COLLECTION SUBSTATION
 - PROPOSED ACCESS ROAD
 - PROPOSED LAYDOWN YARD
 - PROPOSED OPERATIONS AND MAINTENANCE YARD
 - PROPOSED SOLAR PANEL ARRAY
 - SELECTIVE TREE CLEARING
 - TREE CLEARING
 - ANTICIPATED LEASE/PURCHASE AREAS

NOTES:

1. THIS FIGURE IS DESIGNED TO BE VIEWED OR PRINTED IN COLOR AT 11X17.
2. NON-CONTIGUOUS PORTIONS OF FACILITY PARCELS WHICH ARE NOT CONTROLLED FOR USE AS PART OF THE FACILITY ARE NOT SHOWN ON THIS MAP.
3. THE WETLAND STUDY AREA CONSISTS OF THE FACILITY SITE EXCEPT AREAS OF LANDOWNER-IMPOSED DEVELOPMENT RESTRICTION.

BASE MAP: NYSGIS "LATEST ORTHOIMAGERY" ONLINE SERVICE LAYER.
DATA SOURCES: TRC, NYSGIS.



PROJECT:		RIVERSIDE SOLAR LLC TOWNS OF LYME & BROWNVILLE JEFFERSON COUNTY, NY	
TITLE:		POTENTIAL AGRICULTURAL CO-UTILIZATION AREAS	
DRAWN BY:	A. KAILAS	PROJ. NO.:	373222
CHECKED BY:	S. PARKER	REVISED FIGURE 15-4 Sheet 10 of 10	
APPROVED BY:	S. KRANES		
DATE:	MAY 2022		
		215 GREENFIELD PKWY, STE 102 LIVERPOOL, NY 13088	

